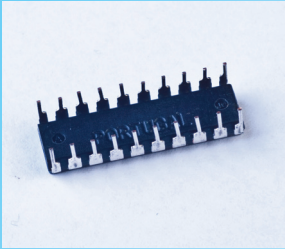
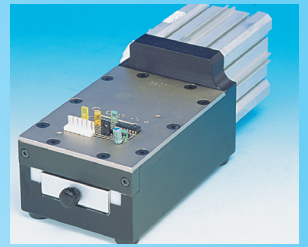


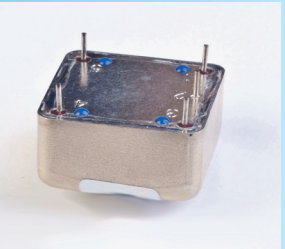
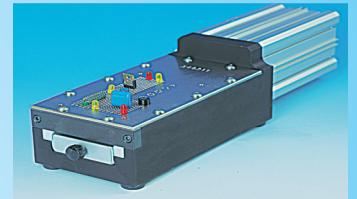
TP/LN-500 PNEUMATIC CUTTING MACHINE FOR LOOSE RADIAL COMPONENTS



TP/LN - 500/1 - 34.0001
 TP/LN - 500/2 - 34.0002



The pneumatic machine TP/LN-500/1 and /2 cuts the leads of any kind of radial components regardless of the diameter, material, pitch and form because it uses a cobalt "guillotine" blade. The upper plate which determines the cutting height (standard 3,2 mm 125") has always to be ordered separately by the machine because most of the times they have to be designed in special way to be adapted to the component requested height, forms and pitches. Additional plates to increase height can be supplied upon request.



TP/LN-500/1 34.0001

Cutting area 53x43 mm.

Standard Stationary plate 340111 to be separately ordered (340111).

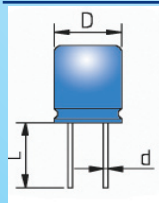
Codes for special plates are assigned at order's receipt

TP/LN-500/2 34.0002

Cutting area 53x93 mm.

Standard Stationary plate 340211 to be separately ordered (340211).

Codes for special plates are assigned at order's receipt.



	MM			IN		
	min	max	fix	min	max	fix
L			3,2			.125
d	0,3	1.3		.011	.051	

PRODUCTION: 3000 P/H