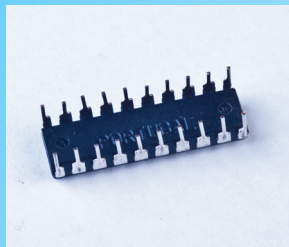
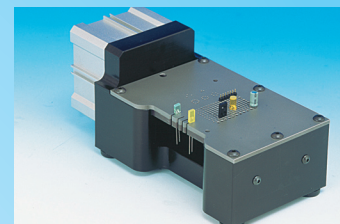


# TP/LN-100

PNEUMATIC CUTTING MACHINE FOR  
LOOSE RADIAL COMPONENTS

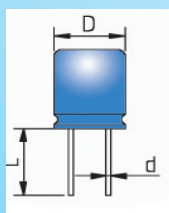


TP/LN-100 - 36.0001



The pneumatic machine TP/LN-100 is used for cutting the leads of loose radial components. It is designed to adapt to a very wide range of radial parts. The upper stationary plate determines the cutting height; the standard is = 3,2 mm. Additional plates to increase this height can be supplied upon request, starting from 0,5 mm. The pneumatic foot pedal controls the stroke of the lower plate, which performs a quick cut of the leads, without any stress to the components. The plates have a standard grid pattern, to accommodate most types of components. Plates with special grid pattern can be provided upon request. Lateral cuts at most common pitches allow to easily handle warped leads

PRODUCTION: 3000 P/H  
CUTTING AREA 45X 54 MM



	MM			IN		
<b>L</b>	min	max	fix	min	max	fix
<b>d</b>	0,3	1	3,2	.011	.039	.125